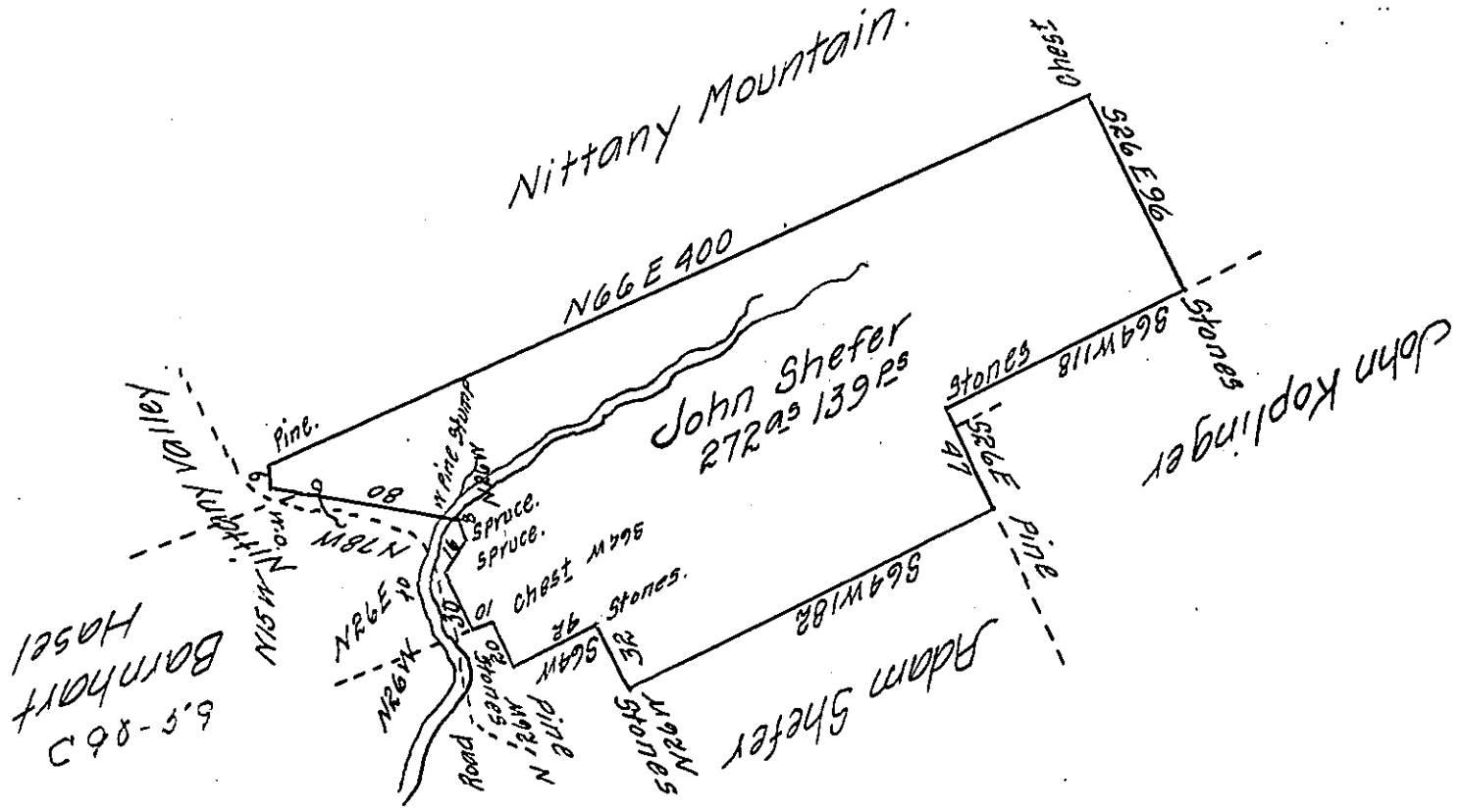


FORM No. 1.

Note, This tract of land is included in the mountain Surveys, but not having a correct Draft of them, I cannot shew the interfering lines.



The Draught of a tract of land Situate in Miles Town-ship Centre County Containing two hundred and Seventy two Acres one hundred and thirty nine perches and allowance of Six per Cent for roads &c. Surveyed the 30th day of May 1816 in pursuance of a warrant granted to John Shefer dated the 23rd day of March 1816.

W^o Kerr D.S.

To Richard T. Leech Esquire
 Surveyor General of Pennsylvania }

IN TESTIMONY that the above is a copy of the original remaining on file in the Department of Internal Affairs of Pennsylvania, made conformably to an Act of Assembly approved the 16th day of February 1833, I have hereunto set my hand and caused the Seal of said Department to be affixed at Harrisburg, this twenty fifth day of February 1907.

Isaac N. Brown
 Secretary of Internal Affairs.